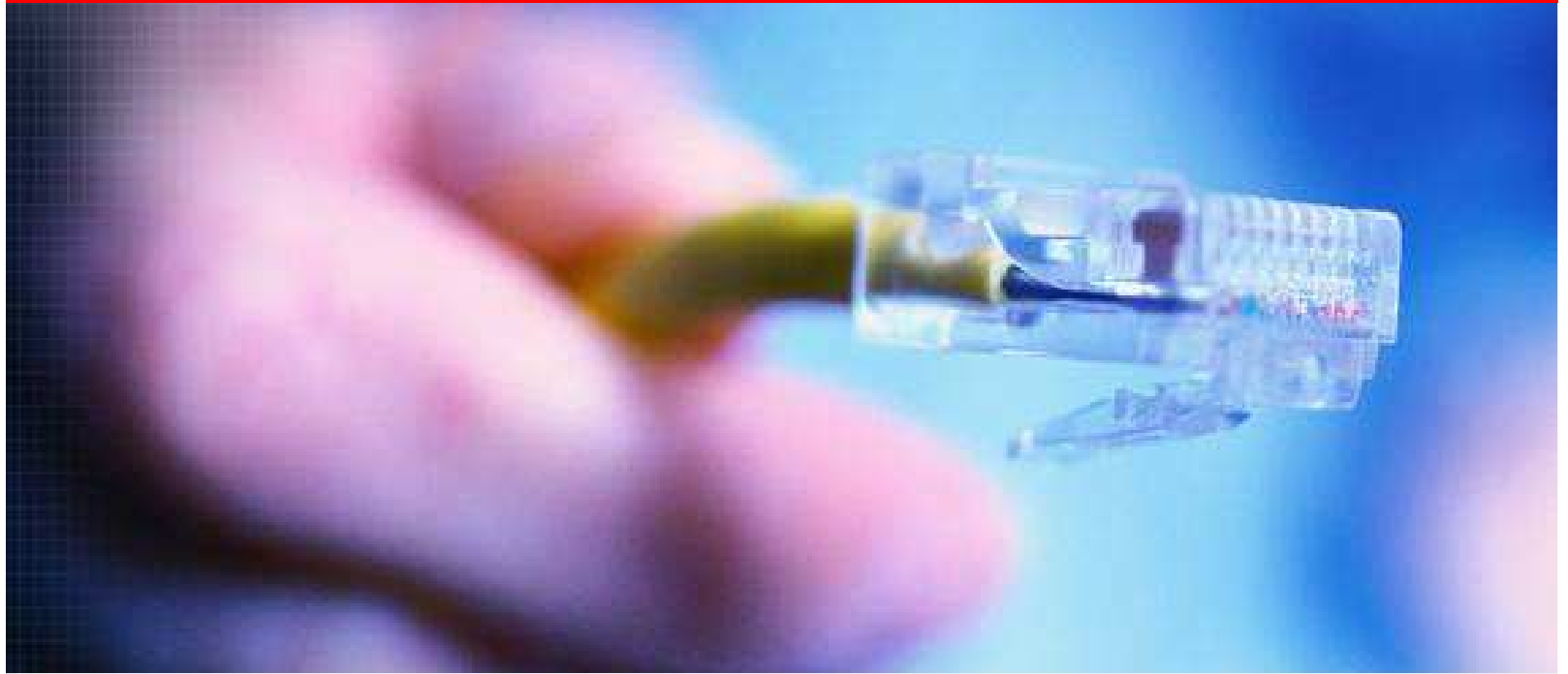
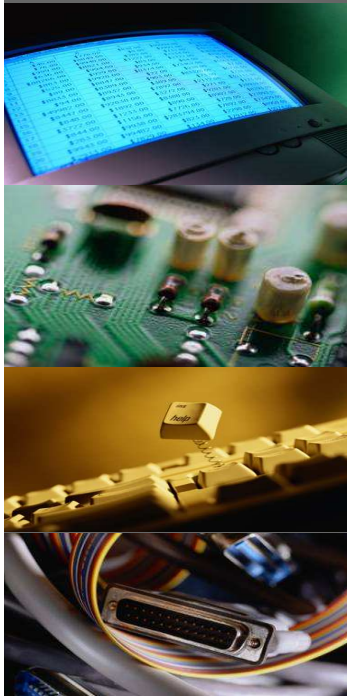
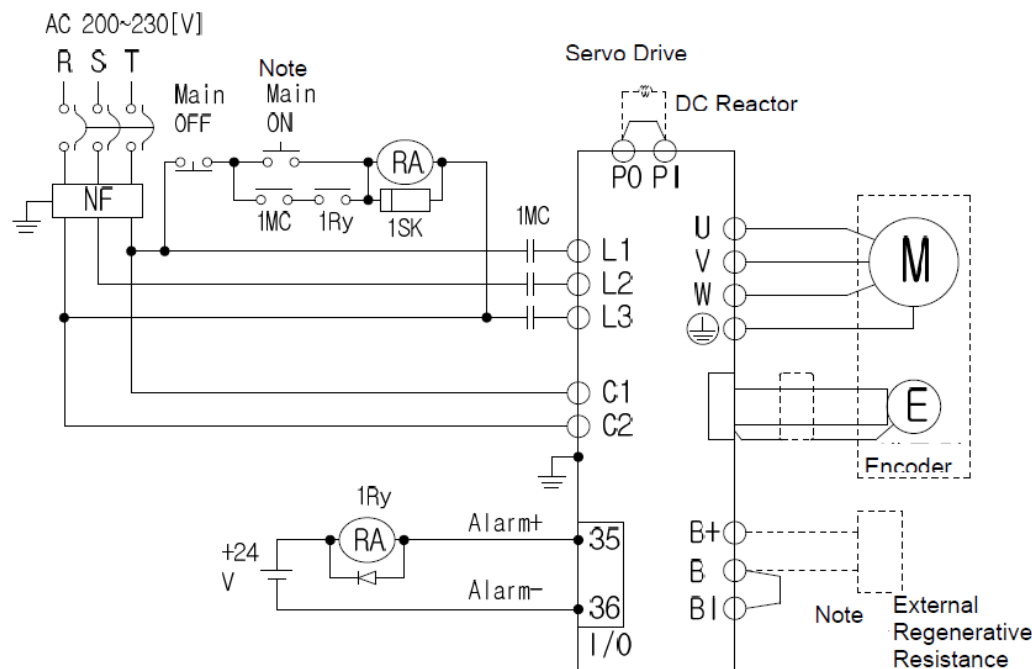


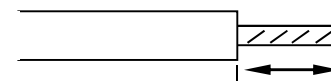
# Guide Book for L7P (Wiring)



24.July,2015  
Technical support team/Eric Son  
LS Mecapion



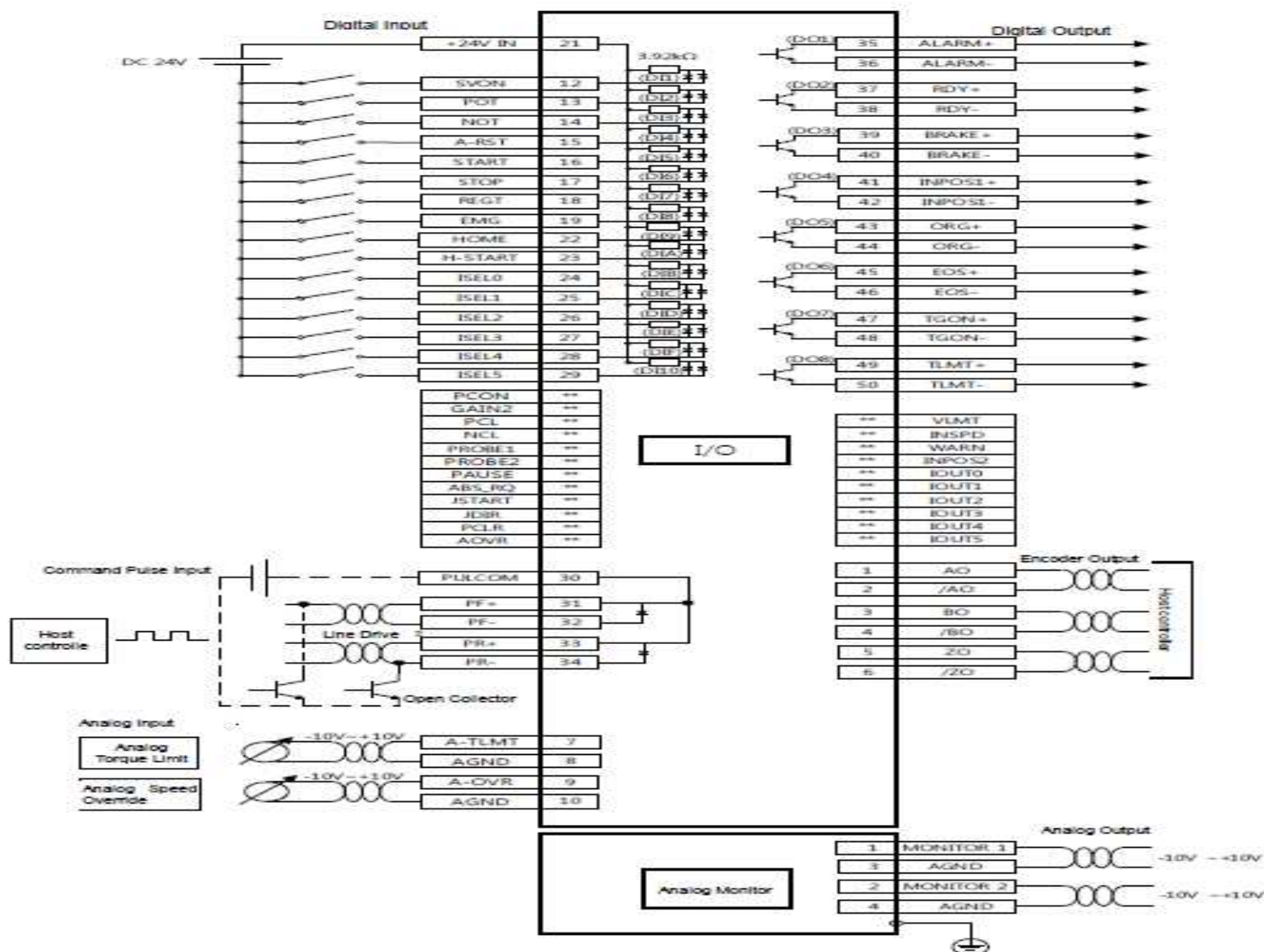
- Note 1) Please press the ON switch for the main power for at least 2 seconds, as the alarm signal input takes 1~2 seconds after the main power is turned on.
- Note 2) 100[W]~400[W]drive has built-in recovery resistance of 50[W], 100[Q]; 800[W]~1[kW]drive has 100[W], 40[Q]; and 2[kW]~3.5[kW]drive has 150[W], 13[Q] recovery resistance. Please use them by shorting terminals B and BI. If the recovery resistance is high due to frequent acceleration/deceleration, please open the shorting pins (B, BI) and connect external recovery resistance to B, B+.
- Note 3) Please peel off the 7~10[mm] of the sheath of the power cable to be used for the power unit as shown in the figure below. And use the dedicated pressure terminal



- Note 4) When removing power unit wiring from 100[W]~1[kW] drive, remove or connect it after pressing the button at the drive's terminal block. In case of 2[kW]~3.5[kW] drive, remove or connect it using a flat-head driver.

# Position Mode

## Wiring Diagram



Input signals DI1~DI10 and output signals DO1~DO8 are the signals allotted at the time of being released from the factory.

Note) Digital output DO06, DP07 cannot be used as other functions when they are set encoder output

## Pin map

## Wiring Diagram

Name	No	Detail	Remark
AO	1	Encoder A Phase Out	Fixed
/AO	2	Encoder /A Phase Out	Fixed
BO	3	Encoder B Phase Out	Fixed
/BO	4	Encoder /B Phase Out	Fixed
ZO	5	Encoder Z Phase Out	Fixed
/ZO	6	Encoder /Z Phase Out	Fixed
A-TLMT	7	Analog Torque Limit	Fixed
A-GND	8	Analog Ground	Fixed
A-OVR	9	Analog Override	Fixed
A-GND	10	Analog Ground	Fixed
+24V IN	11	+24V	Fixed
SV-ON	12	Servo-ON	Default value, Possible to change
POT	13	Positive Torque Limit ( CCWL )	Default value, Possible to change
NOT	14	Negative Torque Limit ( CWL )	Default value, Possible to change
A-RST	15	Alarm-Reset	Default value, Possible to change
START	16	Index Start	Default value, Possible to change
STOP	17	Index Stop	Default value, Possible to change
REGT	18	Registration	Default value, Possible to change
EMG	19	Emergency Stop	Default value, Possible to change
Spare	20	Reserved	
+24V IN	21	+24V	Fixed
HOME	22	Home Sensor	Default value, Possible to change
H-START	23	Home Start	Default value, Possible to change
I-SEL0	24	Index Select 0	Default value, Possible to change
I-SEL1	25	Index Select 1	Default value, Possible to change

Name	No	Detail	Remark
I-SEL2	26	Index Select 2	Default value, Possible to change
I-SEL3	27	Index Select 3	Default value, Possible to change
I-SEL4	28	Index Select 4	Default value, Possible to change
I-SEL5	29	Index Select 5	Default value, Possible to change
<b>PULCOM</b>	<b>30</b>	<b>Pulse Common</b>	<b>Fixed</b>
<b>PF+</b>	<b>31</b>	<b>Pulse Forward +</b>	<b>Fixed</b>
<b>PF-</b>	<b>32</b>	<b>Pulse Forward -</b>	<b>Fixed</b>
<b>PR+</b>	<b>33</b>	<b>Pulse Reverse +</b>	<b>Fixed</b>
<b>PR-</b>	<b>34</b>	<b>Pulse Reverse -</b>	<b>Fixed</b>
ALM+	35	Alarm +	Default value, Possible to change
ALM-	36	Alarm -	Default value, Possible to change
RDY+	37	Ready +	Default value, Possible to change
RDY-	38	Ready -	Default value, Possible to change
BRK+	39	Brake +	Default value, Possible to change
BRK-	40	Brake -	Default value, Possible to change
INPOS+	41	In Position +	Default value, Possible to change
INPOS-	42	In Position -	Default value, Possible to change
ORG+	43	Origin +	Default value, Possible to change
ORG-	44	Origin -	Default value, Possible to change
EOS+	45	End of Sequence +	Default value, Possible to change
EOS-	46	End of Sequence -	Default value, Possible to change
TG-ON+	47	TG-ON +	Default value, Possible to change
TG-ON-	48	TG-ON -	Default value, Possible to change
TLMT+	49	Torque Limit +	Default value, Possible to change
TLMT-	50	Torque Limit -	Default value, Possible to change

## ■ Revision history

<b><i>Number</i></b>	<b><i>Date issued</i></b>	<b><i>Revised content</i></b>	<b><i>Version Number</i></b>	<b><i>Notes</i></b>
1				